

ACCESSING VR COURSE & SUBMITTING STUDENT REPORT

1

PUT HEADSET ON



2

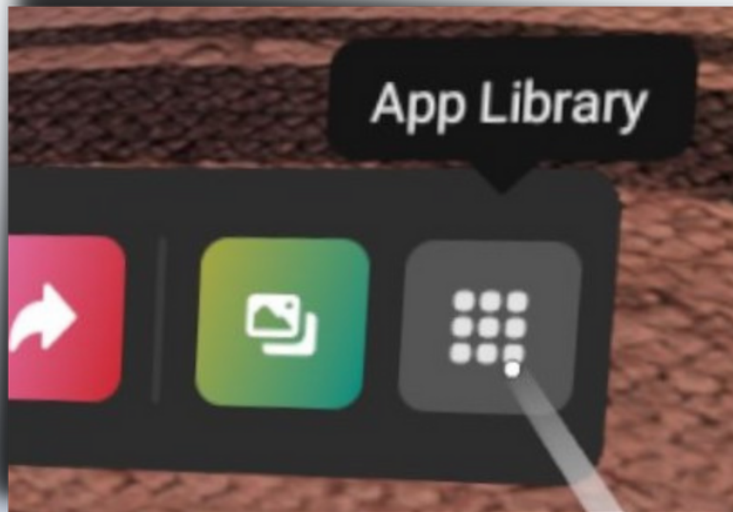
SET BOUNDARY



ACCESSING VR COURSE & SUBMITTING STUDENT REPORT

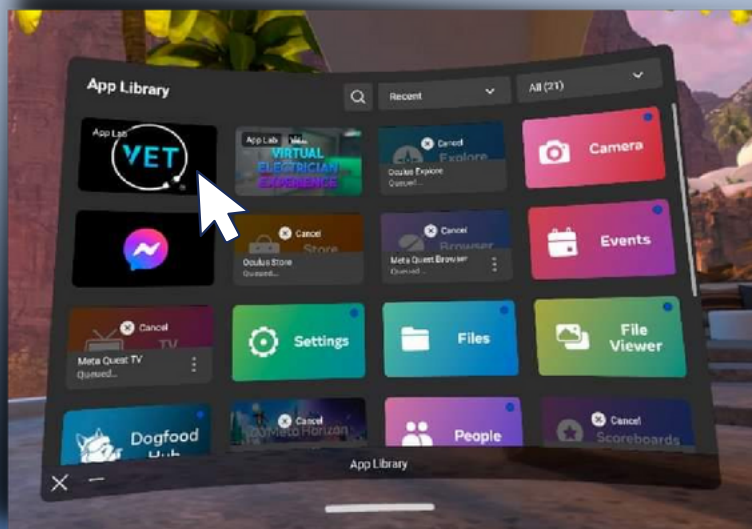
3

NAVIGATE TO APP LIBRARY 🔍



4

LOCATE AND CLICK VET APP 🔍



ACCESSING VR COURSE & SUBMITTING STUDENT REPORT

5

CLICK LMS LOGIN BUTTON



6

TYPE ACCESS CODE



- Reference the 6 digit access code you generated on the LMS site and type it in the headset
- Access codes will vary for each lesson



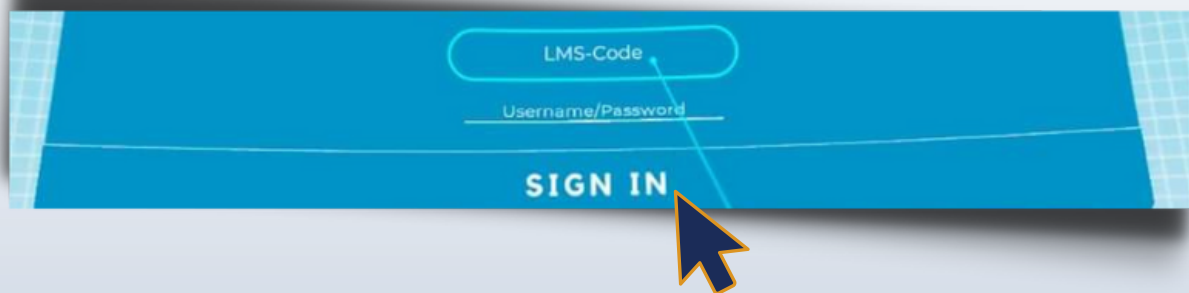
ACCESSING VR COURSE & SUBMITTING STUDENT REPORT

7

CLICK "SIGN IN"

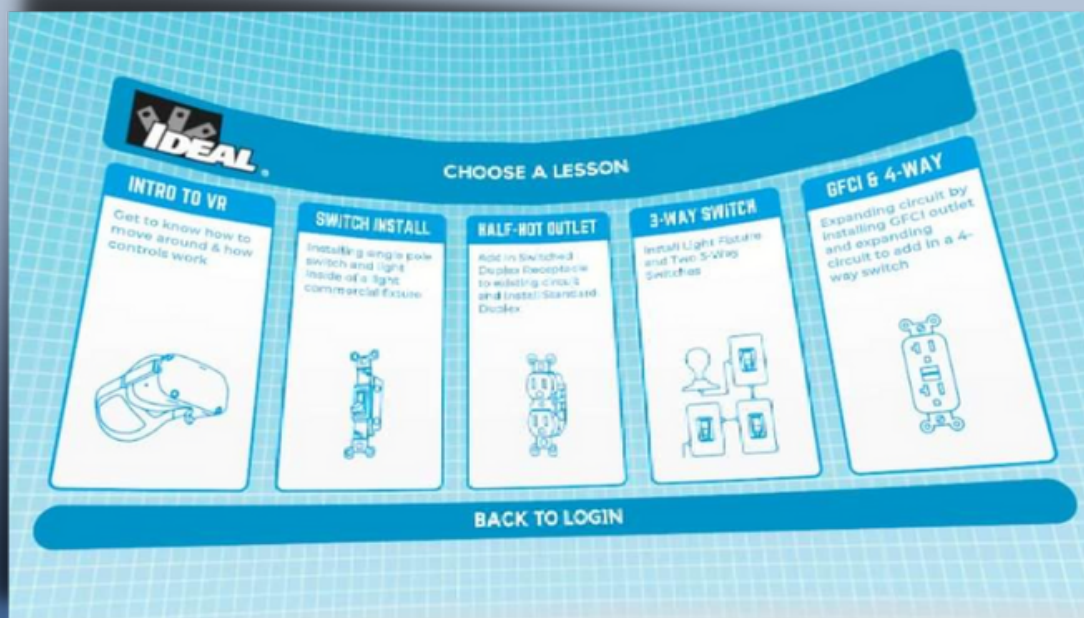


01



8

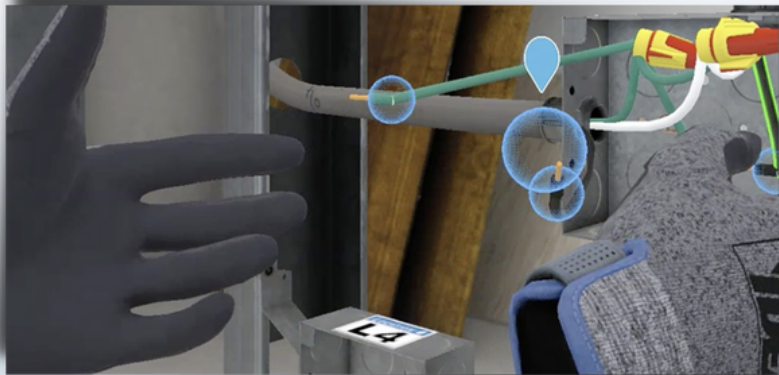
LAUNCH TARGET LESSON



ACCESSING VR COURSE & SUBMITTING STUDENT REPORT

9

COMPLETE LESSON



10

DISPLAY RESULTS



- Following lesson completion, return to LMS and click the "Display Results" button to access your results.

Display Results

Guided Mode: Single Pole Switch Installation

DATE	TIME	STATUS
10/10/2021	10:10	Completed

Student Info

Student ID: vr_student1@ideallindustries.org
Student Name: undefined VR Student1
Lesson Status: Not Attempted

Get Started

Access Code: **BAA858**

VR Headset Instructions:

1. Open the VET (Virtual Electrical Training) application on the VR headset and wait for the login screen.
2. Below the "Username" and "Password" fields, select "LMS Login".
3. Select the "LMS Code" input field and enter the access code above: BAA858
4. Once entered, click "Sign In". If you are prompted with an error message, attempt to enter the code again. If the problem persists, you may try exiting the session on your browser and generate a new login token.
5. Once you log in, you will see two lessons available to you: "Tetro to VR" and the current lesson that you generated a token for. You will see locked lessons that can be unlocked by accessing the other VR training lessons on the LMS.
6. When you've selected the training lesson, you will see Guided or Test mode. Whichever mode you generated a token for will be unlocked, while the other will remain locked. Select the unlocked option and your headset will load you into the environment.
7. Once you've completed the training lesson, exit out of it and return to the home hub of the VET app. You can then take off your VR headset and return to your internet browser. Your score will be available below by clicking on the green "Display Results" button on this page.
8. Once you see your score, click "Submit Results" and the score will be submitted to your instructor and will be available to view in the "Reports" section of your LMS.

Display Results

Test Status: Log into the headset to start your test.

Submit Results

ACCESSING VR COURSE & SUBMITTING STUDENT REPORT



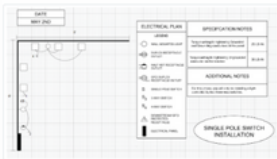
11

SUBMIT RESULTS



- When finished click "Submit Results" to report your results to the your instructor

Guided Mode: Single Pole Switch Installation



Student Info

Student ID: vt_student1@idealindustries.org
Student Name: undefined VR Student1
Lesson Status: Not Attempted

Get Started

Access Code: **BAA858**

VR Headset Instructions:

1. Open the VET (Virtual Electrical Trainings) application on the VR headset and wait for the login screen.
2. Below the "Username" and "Password" fields, select "LMS Login".
3. Select the "LMS Code" input field and enter the access code above: BAA858
4. Once entered, click "Sign In". If you are prompted with an error message, attempt to enter the code again. If the problem persists, you may try exiting the session on your browser and generate a new login token.
5. Once you log in, you will see two lessons available to you: "Intro to VR" and the current lesson that you generated a token for. You will see locked lessons that can be unlocked by accessing the other VR training lessons on the LMS.
6. When you've selected the training lesson, you will see Guided or Test mode. Whichever mode you generated a token for will be unlocked, while the other will remain locked. Select the unlocked option and your headset will load you into the environment.
7. Once you've completed the training lesson, exit out of it and return to the home hub of the VET app. You can then take off your VR headset and return to your internet browser. Your score will be available below by clicking on the green "Display Results" button on this page.
8. Once you see your score, click "Submit Results" and the score will be submitted to your instructor and will be available to view in the "Reports" section of your LMS.

Display Results

Test Status: Log into the headset to start your test.

Submit Results

Submit Results